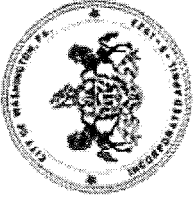




City of Washington



City Hall is Located at:
55 West Maiden Street, Washington, PA 15301
Phone 724-223-4200 FAX 724-223-4229
www.washingtonpa.us

[Home Page](#)

[Washington City Council & Officials](#)

[Committees and Boards](#)

[City Departments](#)

[Points of Interest](#)

[Calendar of Events](#)

[General City Information](#)

[Licenses, Permits and Fees](#)

[Codes and Ordinances](#)

[Frequently Asked Questions](#)

[Suggestion Box](#)

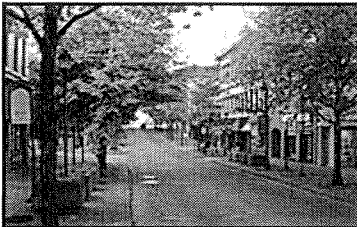
[Web Site Links](#)

- Mayor** -- L. Anthony Spossey (D-2011)
- Councilman** -- Matthew Staniszewski (2009)
- Councilman** -- Tom Blackhurst (D-2011)
- Councilman** -- Joe Manning (D-2013)
- Councilman** -- Terry L. Faust (D-2011)

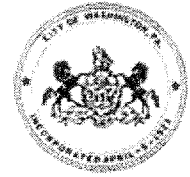
Council meetings are located at City Hall
(check the calendar of events for dates & times)

Washington City Officials

Treasurer	Dennis L. Adams (D)	Phone: 724-223-4220
Deputy Treasurer	Susan Bonus	Phone: 724-223-4216
Controller	Nicholas Dubina (D)	Phone: 724-223-4053
City Clerk	Cathy B. Voytek	Phone: 724-223-4200
Police Chief	Roger Blyth	Phone: 724-223-4226
Fire Chief	Linn Brookman	Phone: 724-223-4227
Code Enforcement Officer	Ron McIntyre	Phone: 724-223-4203
Deputy Finance Officer	Janice I. Blumer	Phone: 724-223-4206
Computer Systems/ Web Site Coordinator	Lynn A. Galluze	Phone: 724-223-4232
Solicitors	Lane Turturice	Phone: 724-222-4880



City of Washington



City Hall is Located at:
 55 West Maiden Street, Washington, PA 15301
 Phone 724-223-4200 FAX 724-223-4229
www.washingtonpa.us

Home Page

Washington City Council & Officials

Committees and Boards

City Departments

Points of Interest

Calendar of Events

General City Information

[Important Phone Numbers](#)

[History of the City](#)

[City Map](#)

[Photo Gallery](#)

Licenses, Permits and Fees

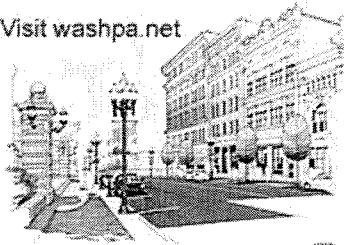
Codes and Ordinances

Frequently Asked Questions

Suggestion Box

Web Site Links

Visit washpa.net

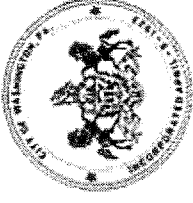


Visit washpa.net for information about the Economic Development Project, Capitol Improvements & Service Plan and City Events!

Police and Fire Emergencies	911
Anonymous, Non-Emergency, Code Enforcement	1-866-433-TIPS (8377)
Central Fire Station	724-223-4228
City Building	724-223-4200
City Clerk	724-223-4209
Finance Director	724-223-4206
Fire Chief	724-223-4227
Mayor's Office	724-223-1380
Parking Authority	724-223-4211
Police Chief	724-223-4221
Safety Department	724-223-4235
Street Department	724-223-4233
Tax Office	724-223-4215
Tylerdale Fire Station	724-223-4231
Zoning & Building	724-223-4203
Washington School District	724-223-5000
County Assessment Office	724-228-6850
Department of Environmental Resources	724-941-7100
FBI	412-471-2000
Magistrate Spence	724-228-8836
Observer Publishing Company	724-222-2200
Pennsylvania State Police	724-223-5200
Redevelopment Authority	724-228-6865
Tax Claim Bureau	724-228-6767
Washington Cemetary	724-225-1040
Washington Hospital	724-225-7000
WJPA	724-222-2110
WKEG	724-228-1343



City of Washington



City Hall is Located at:
55 West Maiden Street, Washington, PA 15301
Phone 724-223-4200 FAX 724-223-4229
www.washingtonpa.us

- [Home Page](#)
- [Washington City Council & Officials](#)
- [Committees and Boards](#)
- [City Departments](#)
- [Points of Interest](#)
- [Calendar of Events](#)
- [General City Information](#)
- [Licenses, Permits and Fees](#)
- [Codes & Ordinances](#)
- [Frequently Asked Questions](#)
- [Suggestion Box](#)
- [Web Site Links](#)

Code questions should be directed to the Code Enforcement Officer.

Ron McIntyre 724-223-4203
City Hall
55 West Maiden Street
Washington, PA 15301

BCO - Jerry Coleman
724-223-4228

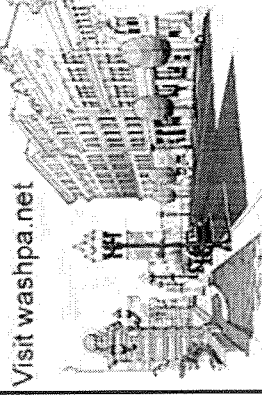
[Click Here to view Zoning Map](#)

Important Links:

City Ordinances - General Code
<http://www.e-codes.generalcode.com>

Pennsylvania One Call System Inc
<http://www.pa1call.org/POCS/index16.aspx>

Pennsylvania Department of Environmental Protection
<http://www.dep.state.pa.us>



Visit washpa.net

Visit washpa.net for information about the Economic Development Project, Capitol Improvements & Service Plan and City Events!